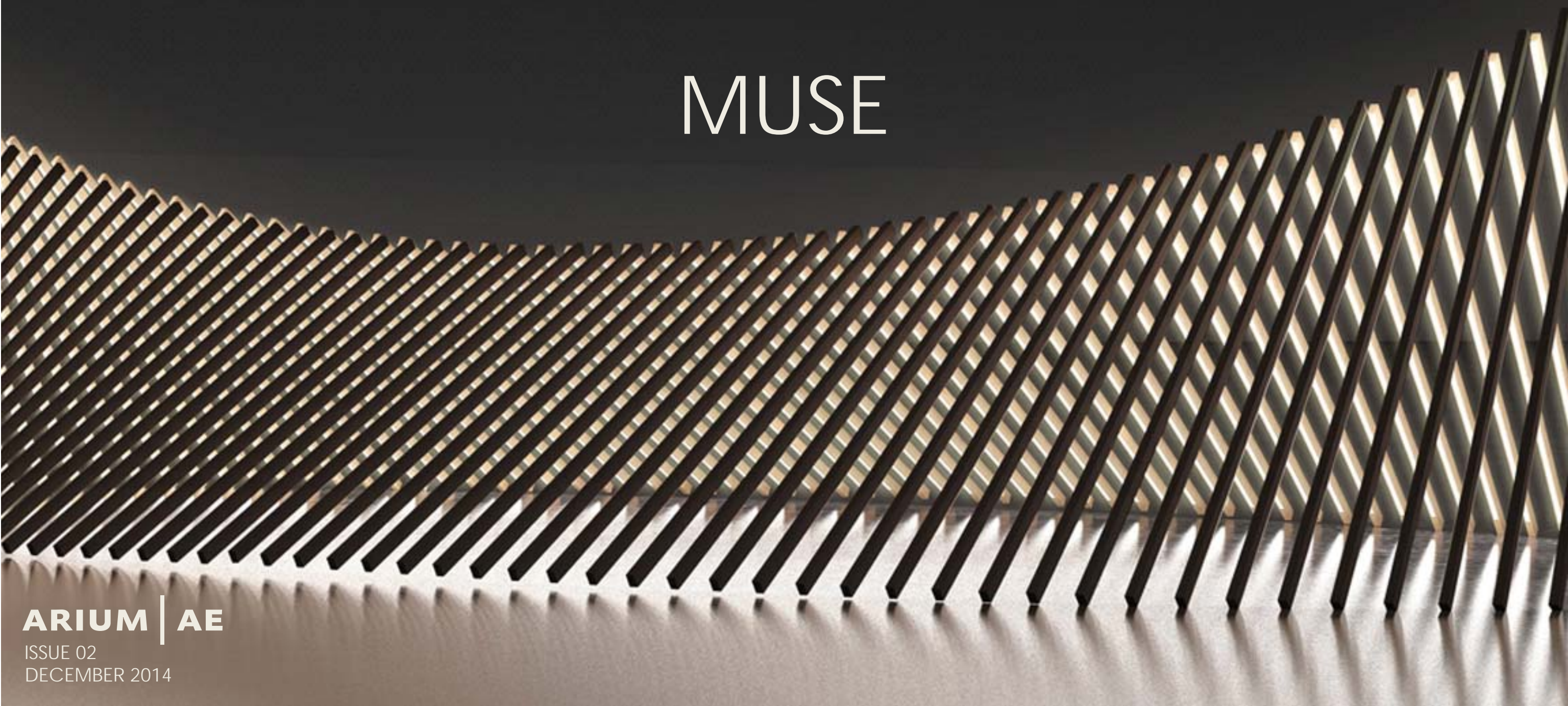


MUSE



ARIUM | AE

ISSUE 02
DECEMBER 2014

This special issue of MUSE explores the broad theme of Light. In the spirit of the season, when houses and trees are blanketed in twinkling lights and the warm glow of a fire conjures familiar feelings of family and home, this issue introduces projects encompassed under the expansive theme of light.

Issue 02 of MUSE entertains the multiple personalities of light through Architecture, Interiors, and Design. Light and shadow act as sculptors of volume, altering the character of spaces through visual brightness and darkness. In turn, materiality and form evoke either a sense of lightness or heaviness through texture and color, leaving a lingering feeling of either buoyancy or weight as a result. When used as a tool, light becomes a beacon, visually drawing the eye to an exact location, or strategically away from another. Whether it's the warm golden radiation of natural sunlight, the stark cold beam of a bright white LED, or the familiar comfort of a faint orange filament bulb, light has a mesmerizing quality that has enticed and inspired design for centuries.

Light proves itself as a worthy muse for design through the selected projects forming this issue. We hope you find this issue as enlightening as we did.

Sincerely,

The Editors:
Laura Watson
Elizabeth Pelletier
Madeline Mirecki

PS. We received a question from one reader after ISSUE 01, inquiring how we decided upon the title MUSE. We selected the name 'MUSE' as a synonym for 'inspiration.' The title of the digital magazine serves as an indication of the overarching purpose of the magazine: to spark design inspiration within our readers.

ARCHITECTURE



100PP OFFICE BUILDING



RAW:almond POP UP RESTAURANT



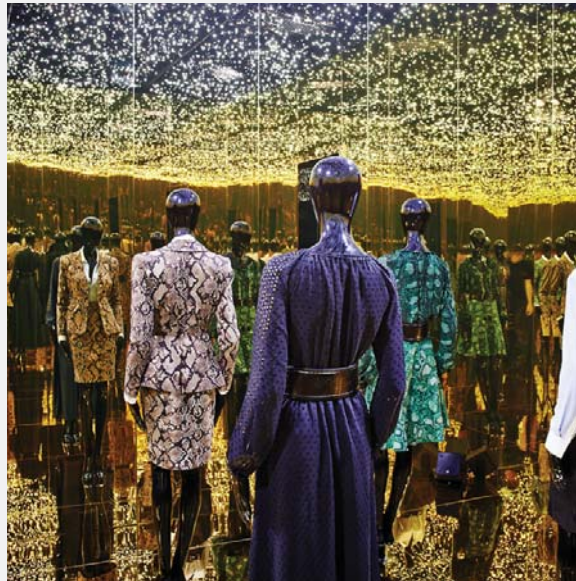
BROAD MUSEUM



HEYDAR ALIYEV CENTER



FONDATION LOUIS VUITTON



ALTUZARRA POP UP SHOP



COBE'S TAMPERE TRAVEL AND SERVICE CENTER



NEW YORK APARTMENT SERIES



SITUATION ROOM



HARLEM LAW LIBRARY

INTERIORS

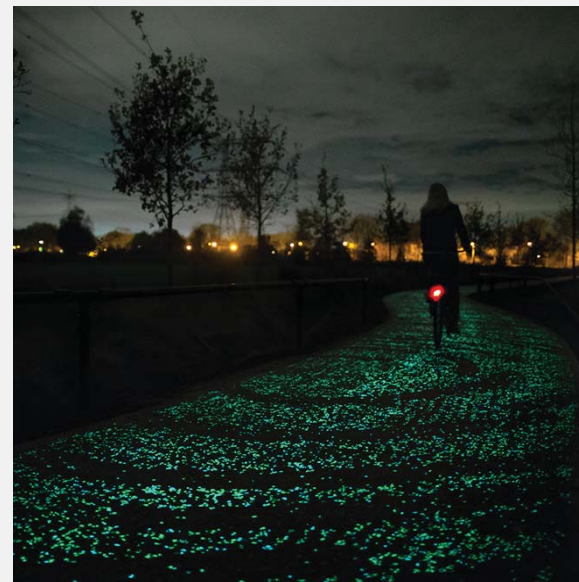
DESIGN



LICHTGRENZE (BORDER OF LIGHT)



WONDERBUG INSTALLATION



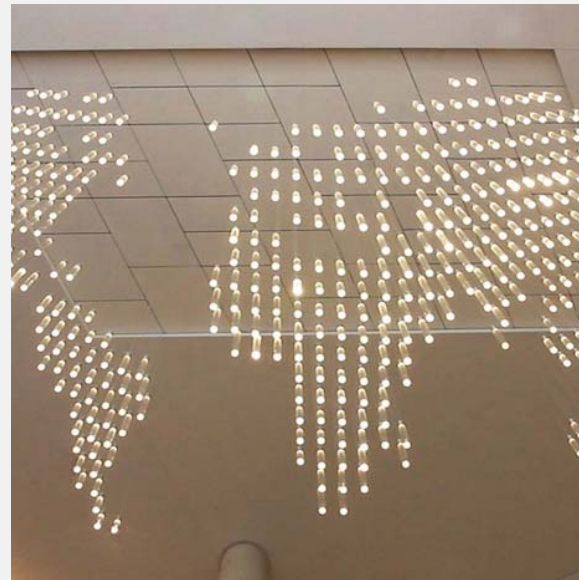
STARRY NIGHT BIKE PATH



THE CYCLIST BAG



UIIUIUI BENCH



GLOBAL DATA CHANDELIER



ANILA QUAYYUM AGHA'S "INTERSECTIONS"



BARRISOL PAVILION



LION FISH CHANDELIER



'SHY' FIXTURES BY BEC

SPECIAL FEATURE: LIGHTING INSTALLATIONS