

A symmetrical photograph of two microphones on stands, each illuminated by a spotlight from above. The scene is set against a dark, textured background. The word 'MUSE' is centered in the middle of the image.

MUSE

ARIUM | AE

ISSUE 01

NOVEMBER | DECEMBER 2014

MUSE is a bimonthly digital magazine providing design inspiration within Arium AE. Acting as a platform for new ideas, MUSE emphasizes current projects within the genres of Architecture, Interiors, and Design. This magazine seeks to act as a resource for the firm, serving as a catalyst for conversation, collaboration, and contemplation around the topic of design.

Issue 01 of MUSE introduces the theme of Folly: light-hearted design work occurring within the profession today. Unapologetically expressive designs act as vessels for escape by sparking the curiosity of the user, creating a moment of exploration and discovery. This issue accentuates these intriguing projects, encouraging subtle and bold folly alike.

Each issue of MUSE will feature five sources of Architecture inspiration, five sources of Interiors inspiration, and five sources of Design inspiration. In addition, each issue will conclude with a Guest Contributor spread, in which a member of the Arium AE team will provide five personally curated links sourced from his or her own inspiration library. This month, Elizabeth Pelletier is acting Guest Contributor, sharing the projects, blogs, and designs that incite her creativity.

This inaugural issue of MUSE is a starting point, with the potential for growth and evolution. Our goal is to help you find your muse.

Sincerely,

The Editors:
Elizabeth Pelletier
Laura Watson
Madeline Mirecki

PS. If you are interested in becoming a Guest Contributor in an upcoming issue of MUSE, please e-mail us. You know where to find us.

ARCHITECTURE



DEAR JINGUMAE BUILDING



FUMIHIKO MAKI'S AGA KHAN MUSEUM, TORONTO



MELBOURNE LIBRARY



COLLECTION: SUPER SKINNY HOUSES



STADTHAUS M1 BY BARKOW LEIBINGER



ALMERE CITY HALL



FUNNY OR DIE OFFICES



PRIMARY COLORS: BEATS BY DRE HEADQUARTERS



LA FROMAGERIE DU PASSAGE



TAIYO SUSHI RESTAURANT IN MILAN

INTERIORS

DESIGN



WINDOWSEAT LOUNGE BY MIKE & MAAIKE



CLIVE WILKINSON'S ENDLESS DESK



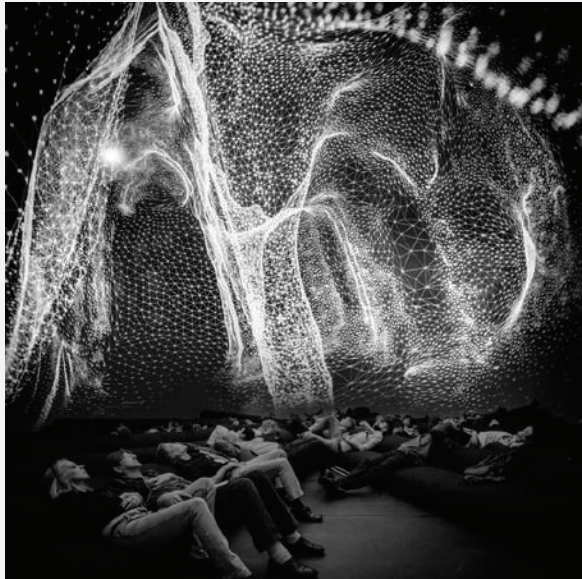
AWARD WINNING LIGHT: TOTAL ECLIPSE



THE ABYSS TABLE



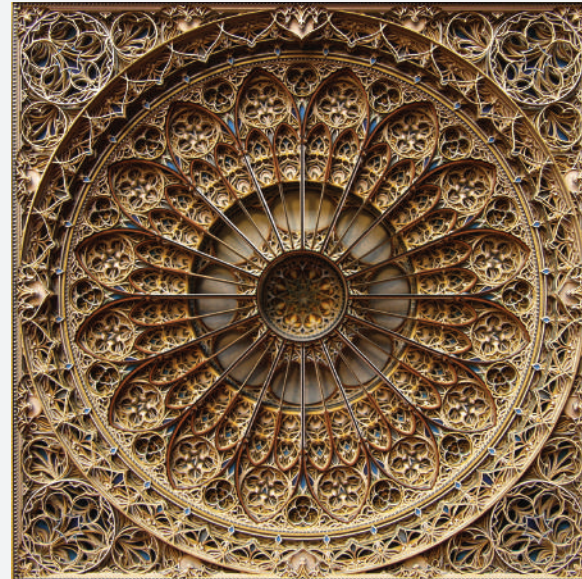
WAVES OF WOOD STAIR



LIGHTING INSTALLATION: NIMBES



THE CUMULUS PARASOL BY STUDIO TOER



3D LASER CUT PAPER ART BY ERIC STANDLEY



21 SERIES LIGHTING FOR BOCCI



FABERGE FRACTALS BY TOM BEDDARD

GUEST CONTRIBUTOR: ELIZABETH PELLETIER