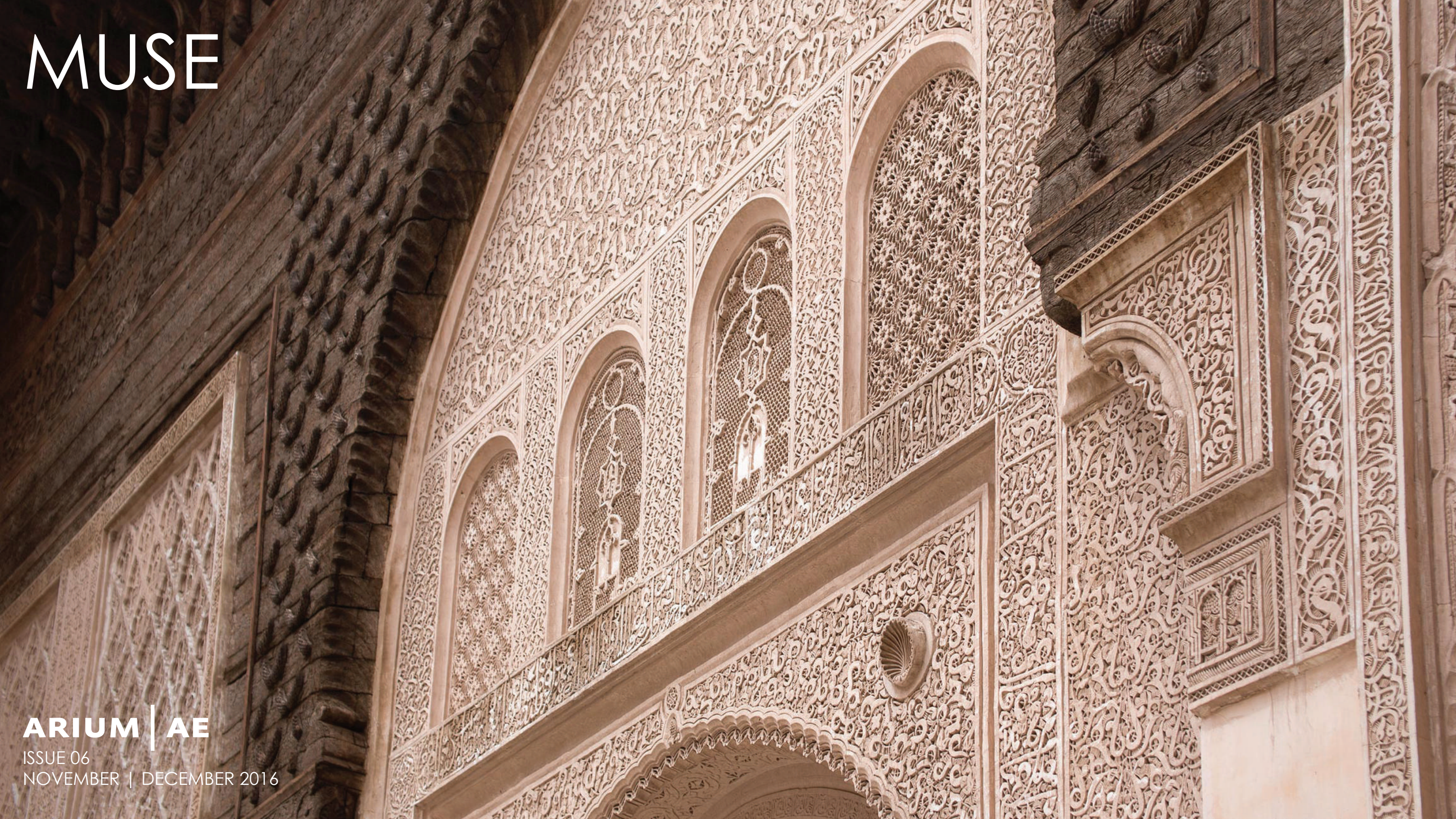


MUSE

ARIUM | AE

ISSUE 06
NOVEMBER | DECEMBER 2016



Issue 06 of MUSE explores the many personalities of pattern: a repeated element employed to organize form and make design intelligible. Often considered strictly decorative, the multifaceted nature of pattern has the ability to resonate with stirring narratives as effortlessly as it delights with superficial embellishment.

Regularly reconciling dissimilar materials and mediums, the new issue of MUSE illuminates pattern's numerous traits. Whimsical and capricious at times, it is substantial and even serious at others. It is the source code of language and design. Pattern sets the stage, establishes the theme, and expresses the tone. It is the vernacular that allows dynamics to provide the highs and lows that capture our attention and transport our emotions. And while threads, musical notes, and masonry are each well-documented elements to pattern, it is our job to reconsider the elements that can be repeated and the messages they can convey. Increasingly, we see new and exciting patterns highlight technology's ability to expedite arduous production and allow the designer greater opportunity for nuance or embellishment. One craftsman may utilize alternative materials to create unexpected ephemeral designs while another employs painstaking carvings and filigree to spatially tell the tale of struggle and success.

A complex muse capable of amusing with frivolity or provoking with sincerity, Issue 06 of MUSE seeks to challenge our preconceptions of the limitations of pattern by highlighting projects that present its immense range. We hope you enjoy the selected projects' ability to convey the superficial, the solemn, and everything in between.

Sincerely,
Ben King
Guest Contributor

The Editors:
Ben King
Kevin Murray
Madeline Mirecki

ARCHITECTURE



MUSEUM OF AFRICAN AMERICAN HISTORY



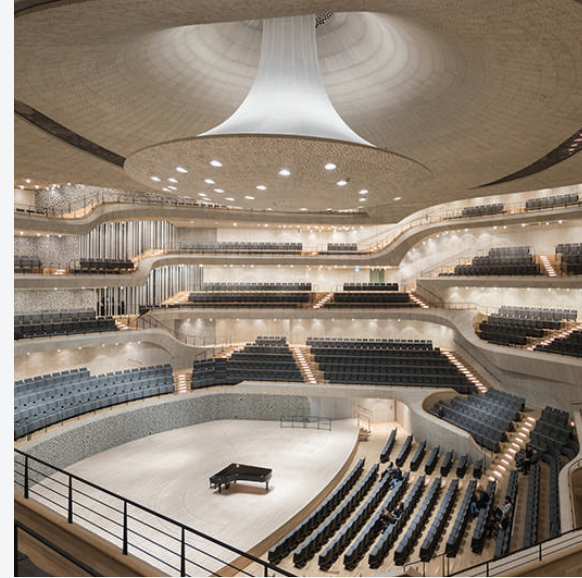
SKY STAGE - FREDERICK MARYLAND



FOREST GREEN ROVERS STADIUM



NANOCO-PANASONIC SHOWROOM



ELBPHILHARMONIE



OPERA HOUSES



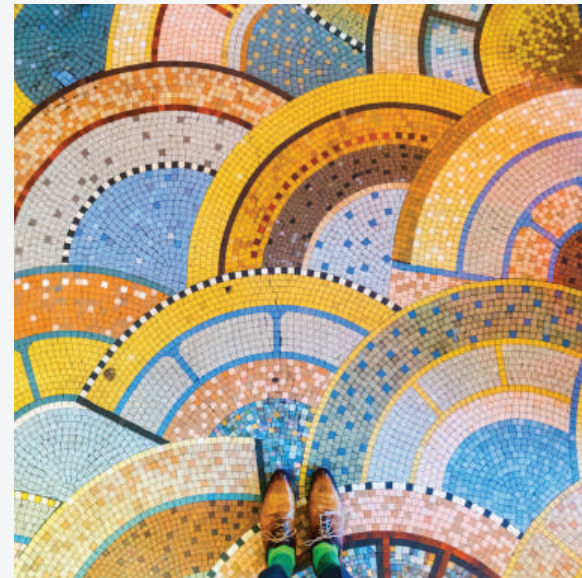
LIGHT MASONRY INSTALLATION



PAVILION DUFOUR CHATEAU DE VERSAILLES



AMORE SULWHASOO FLAGSHIP STORE



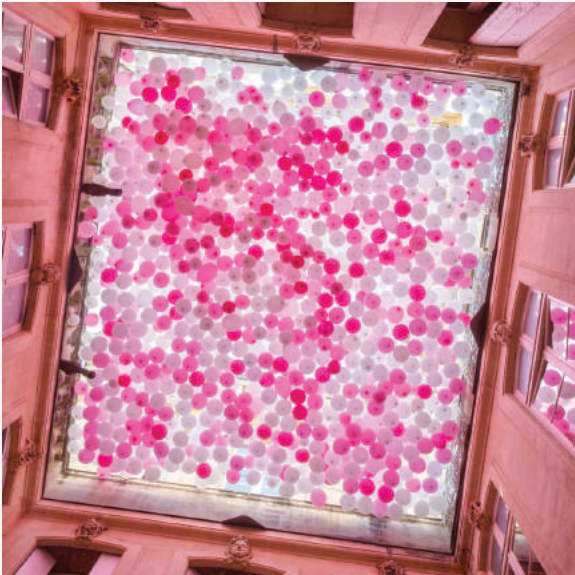
PARIS MOSAIC FLOORS

INTERIORS

DESIGN



MANUS x MACHINA



CHERRY BLOSSOMS BALLOONS



ARCHITECTURE PASSIONS



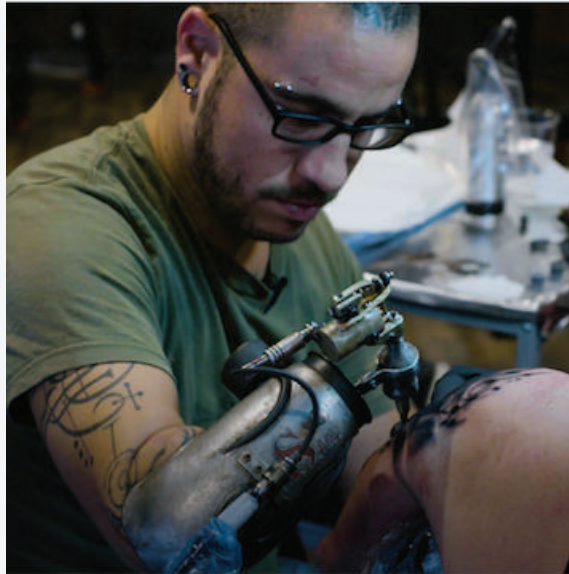
FIELD OF LIGHT



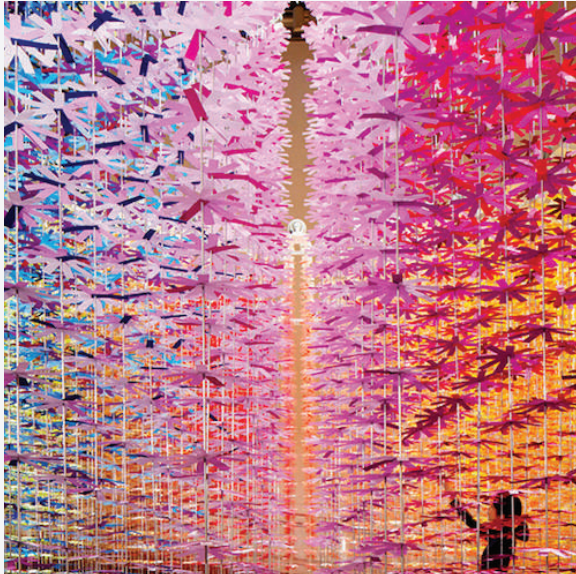
BAS VAN BEEK



IN THE MIDNIGHT GALLERY: RENWICK GALLERY



THE CYBORG ARTIST



COLOR MIXING



TRIMETRICA - PAIVA WALKWAYS



ARRIVAL'S ALIEN ALPHABET

GUEST CONTRIBUTOR: BEN KING